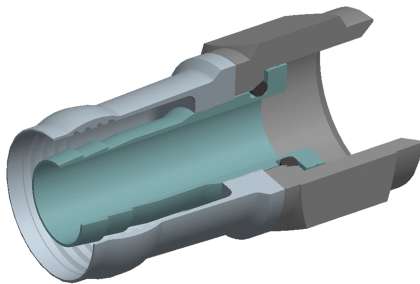


www.icmcorp.net

The DB6U is our Universal "F" type connector that fits standard, tri-shield, and quad-shield RG6U coaxial cable.



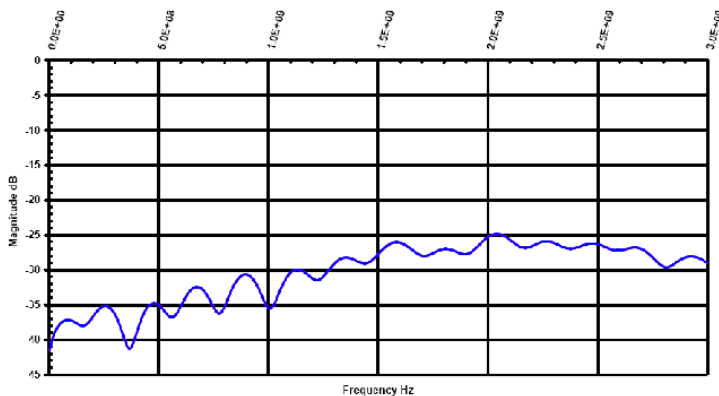
Specifications:

- 75 Ohm Construction
- DC-1 GHz > 30 dB Return Loss < 1.07 VSWR
- DC-2 GHz > 25 dB Return Loss < 1.10 VSWR
- DC-3 GHz > 24 dB Return Loss < 1.16 VSWR
- Cable Pullout Force Exceeding 65 in/lbs.
- Body Material Brass
- Body Material (Plating) Nickel

Coax Sizing (inches)	Min ~ Max
Center	.0399 ~ .0418
Dielectric	.180 ~ .193
Outer Jacket	.265 ~ .305

Coax Sizing (mm)	Min ~ Max
Center	1.01 ~ 1.06
Dielectric	4.57 ~ 4.90
Outer Jacket	6.73 ~ 7.75

Return Loss



Frequency (Hz)	dB
5 MHz	-50.4 dB
15 MHz	-44.2 dB
550 MHz	-37.1 dB
750 MHz	-44.4 dB
1000 MHz	-39.9 dB
2000 MHz	-33.7 dB
3000 MHz	-33.1 dB

Lower return loss (dB) equates to less reflection through the connector while maintaining signal strength